

## ORGANOGRAMA GERAL

GABINETE

PREFEITO

G

STAFF

CONSELHOS  
MUNICIPAIS  
(CONFORME  
L.O.M.).

C M

GABINETE  
DO  
PREFEITO

G P

PROCURADORIA  
GERAL

P G

ASSESSORIA  
DE  
INFORMATICA

A I

GUARDA  
MUNICIPAL

G M

ENCARGOS  
GERAIS DO  
MUNICIPIO

E G

DEPARTAMENTO

TRANSPORTE  
COLETIVO  
E URBANO

D C

ADMINISTRACAO

D A

FINANCAS

D F

SAUDE

D S

EDUCACAO  
E  
CULTURA

D E

TURISMO  
ESPORTE  
E  
LAZER

D T

AGRICULTURA  
E  
ABASTECIMENTO

D G

OBRAS E  
SERVICOS  
URBANOS

D O

PLANEJAMENTO  
E  
MEIO  
AMBIENTE

D P

ORGANOGRAMA DO GABINETE DO PREFEITO

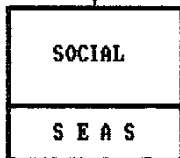
STAFF



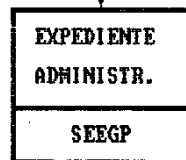
DIVISAO



SERVICO



SETOR



ORGANOGRAMA DA PROCURADORIA GERAL

PROCURADORIA  
GERAL

P G

EXPEDIENTE  
ADMINISTR.

SEEPG

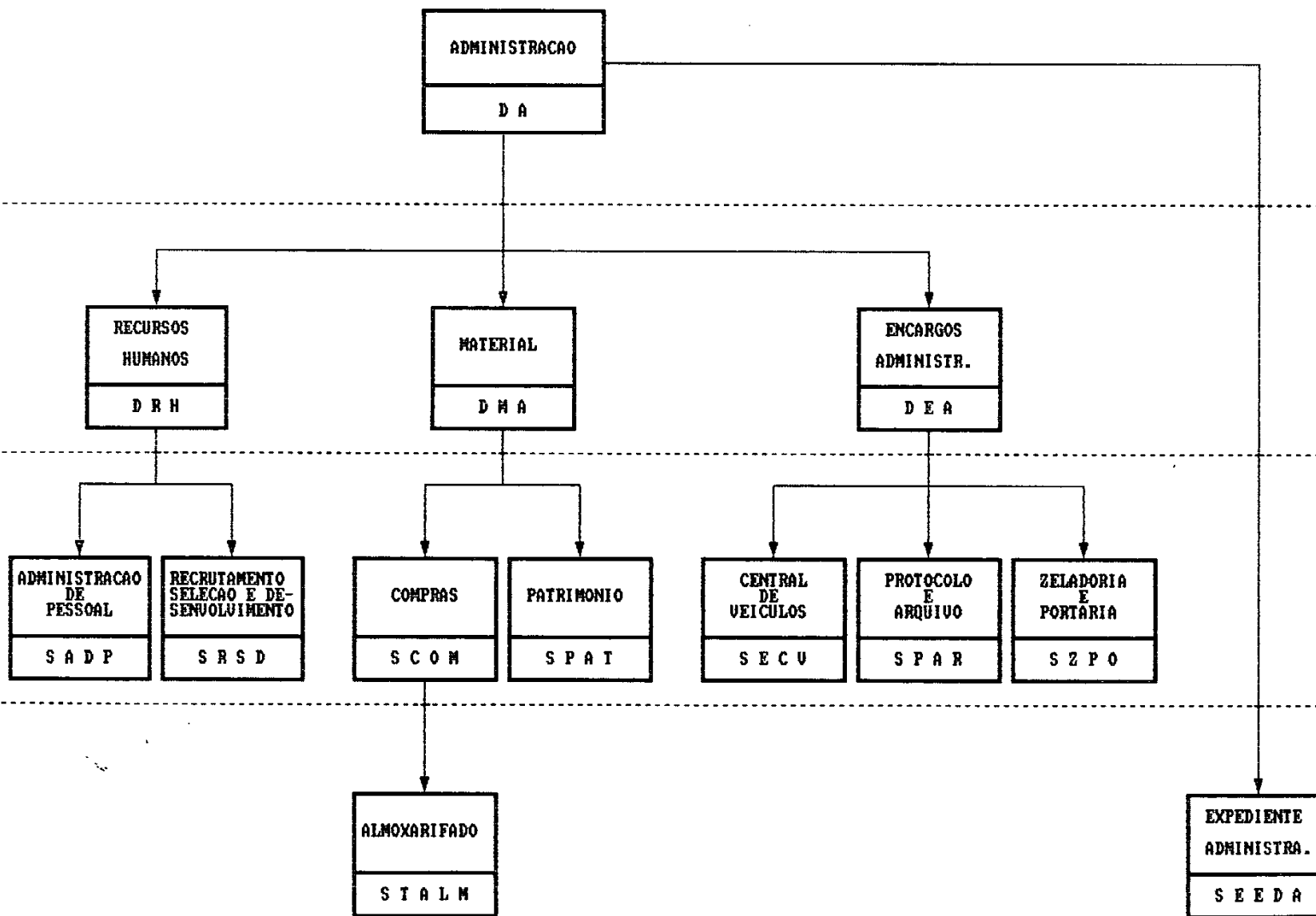
## ORGANOGRAMA DO DEPARTAMENTO DE ADMINISTRACAO

DEPARTAMENTO

DIVISAO

SERVICO

SETOR



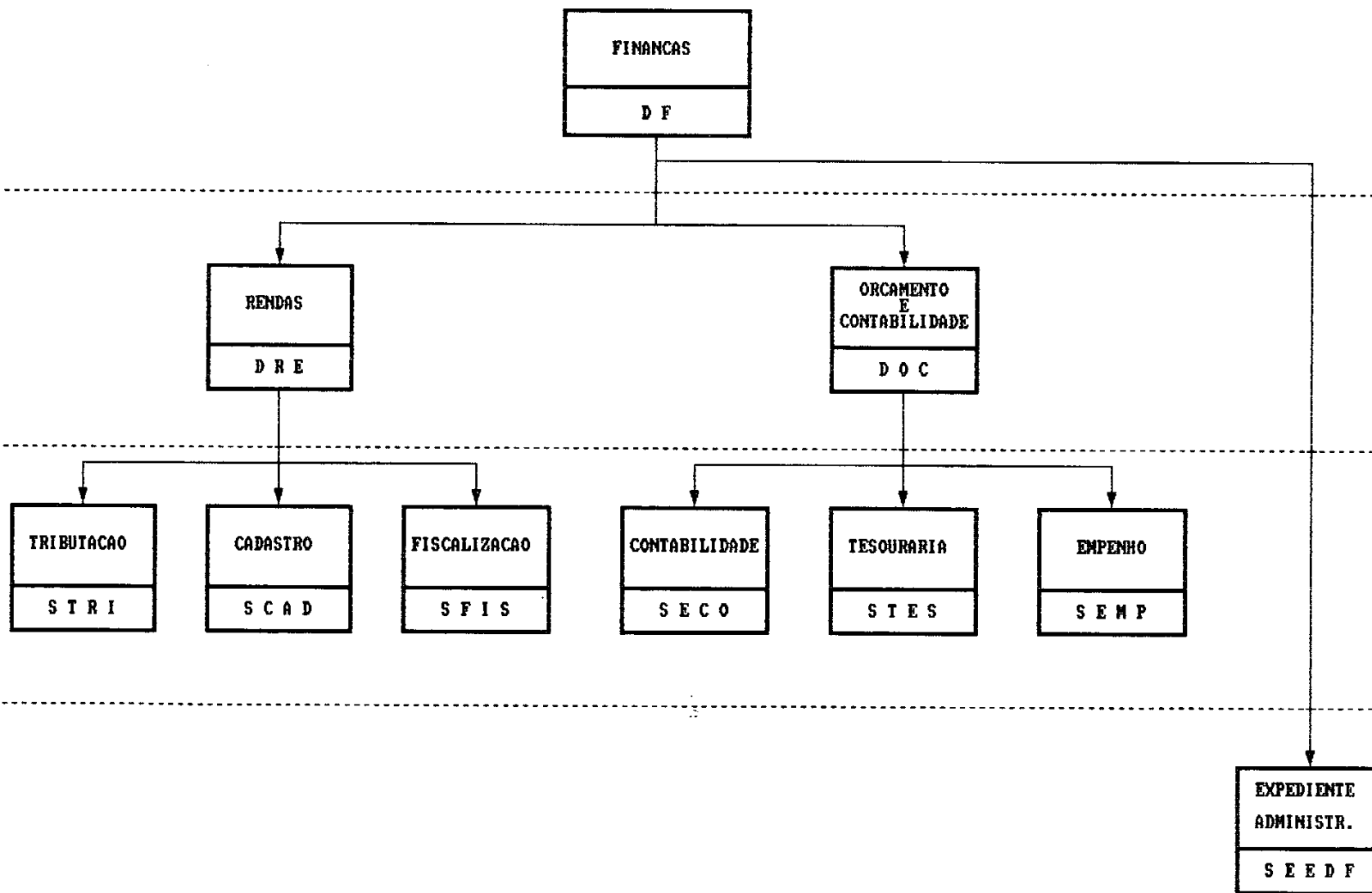
ORGANOGRAMA DO DEPARTAMENTO DE FINANÇAS

DEPARTAMENTO

DIVISAO

SERVICO

SETOR



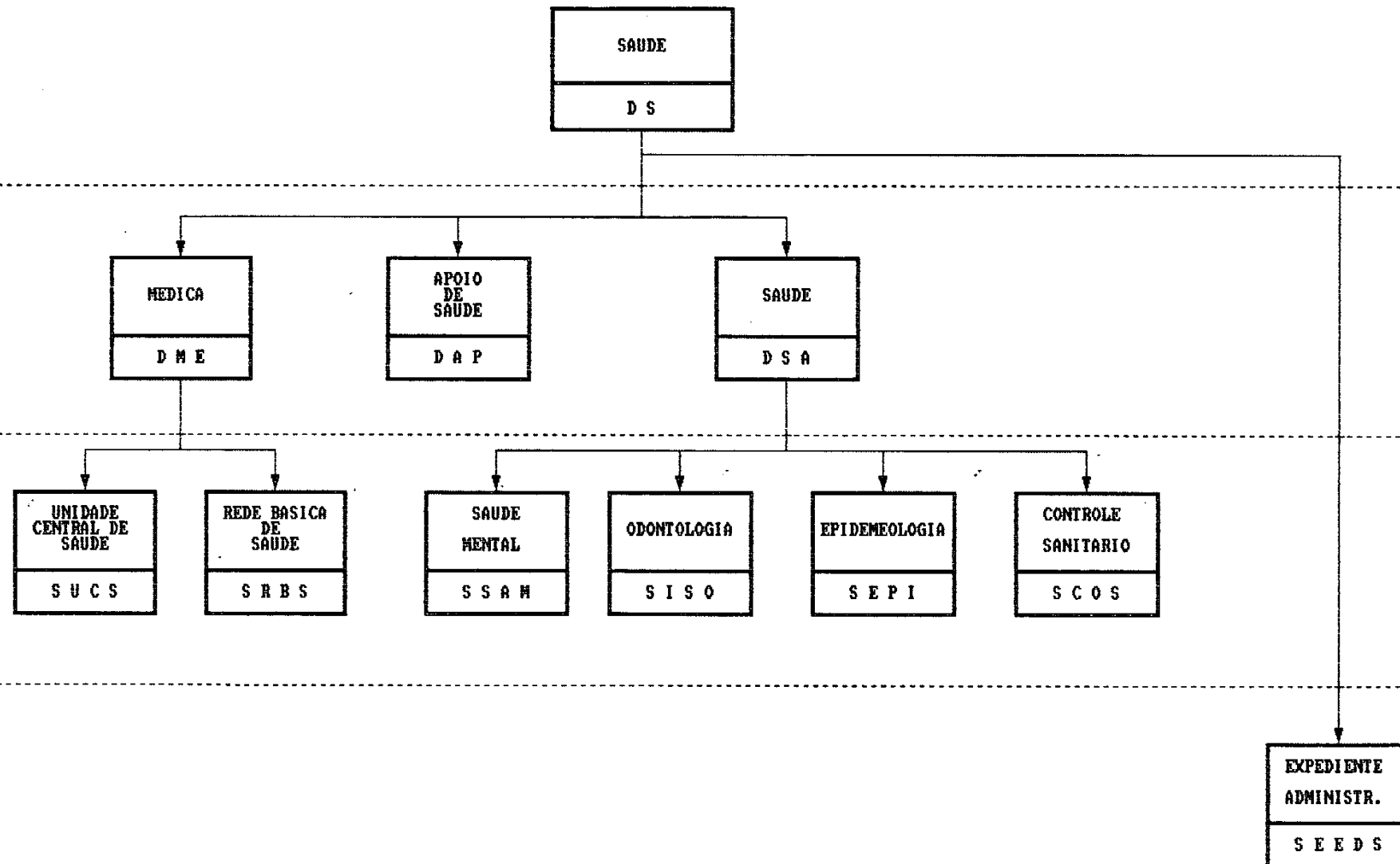
## ORGANOGRAMA DO DEPARTAMENTO DE SAUDE

DEPARTAMENTO

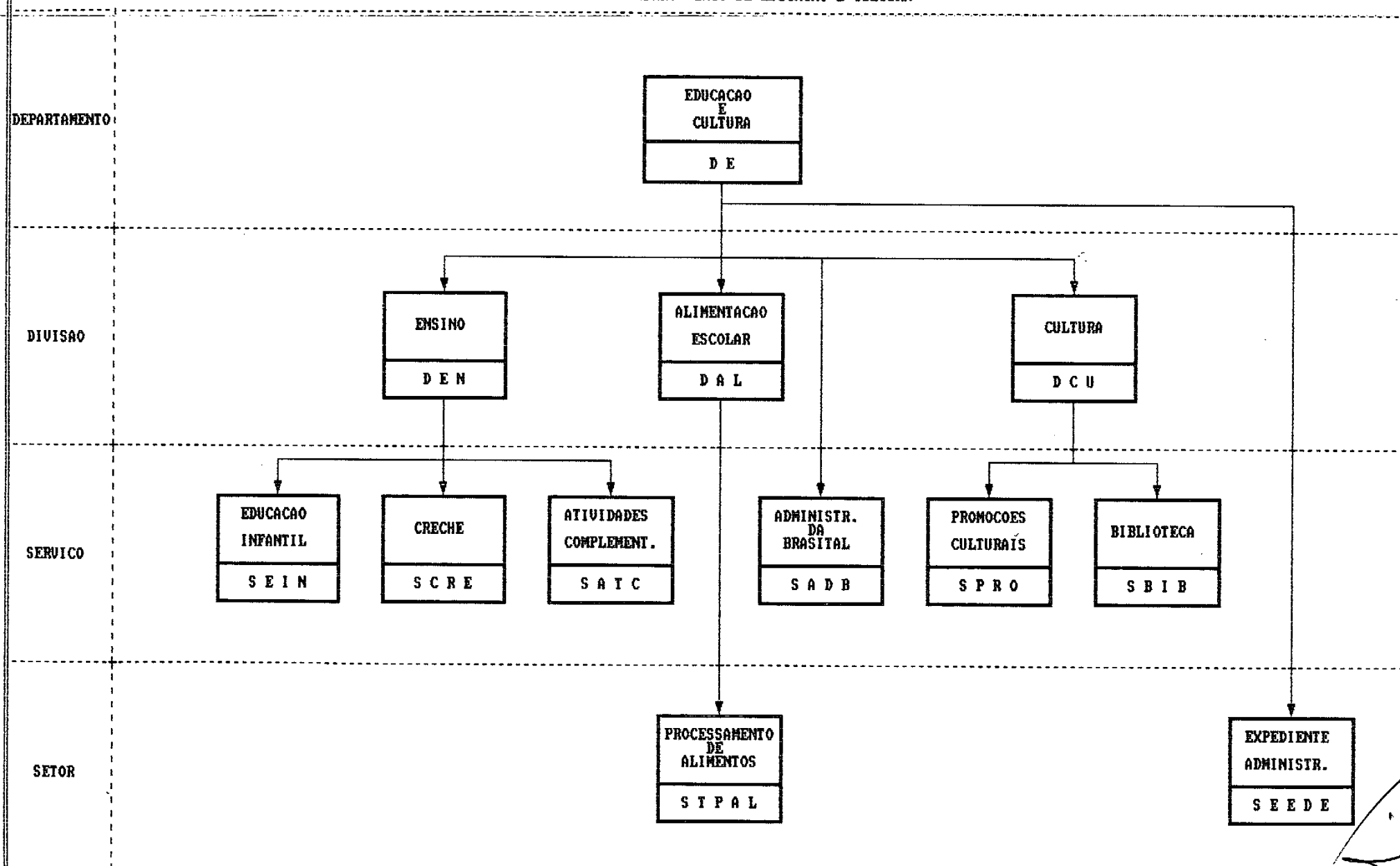
DIVISAO

SERVICO

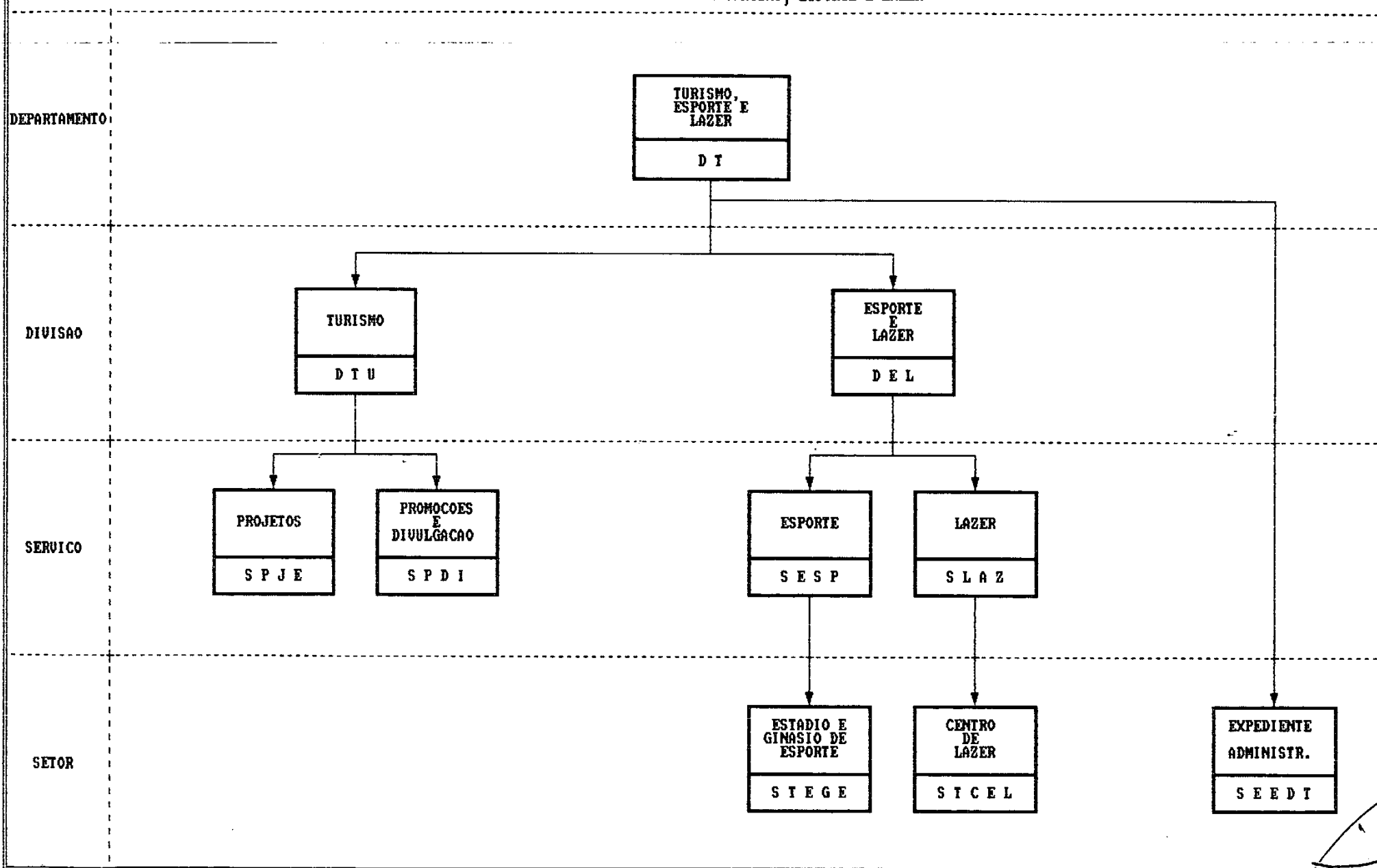
SETOR



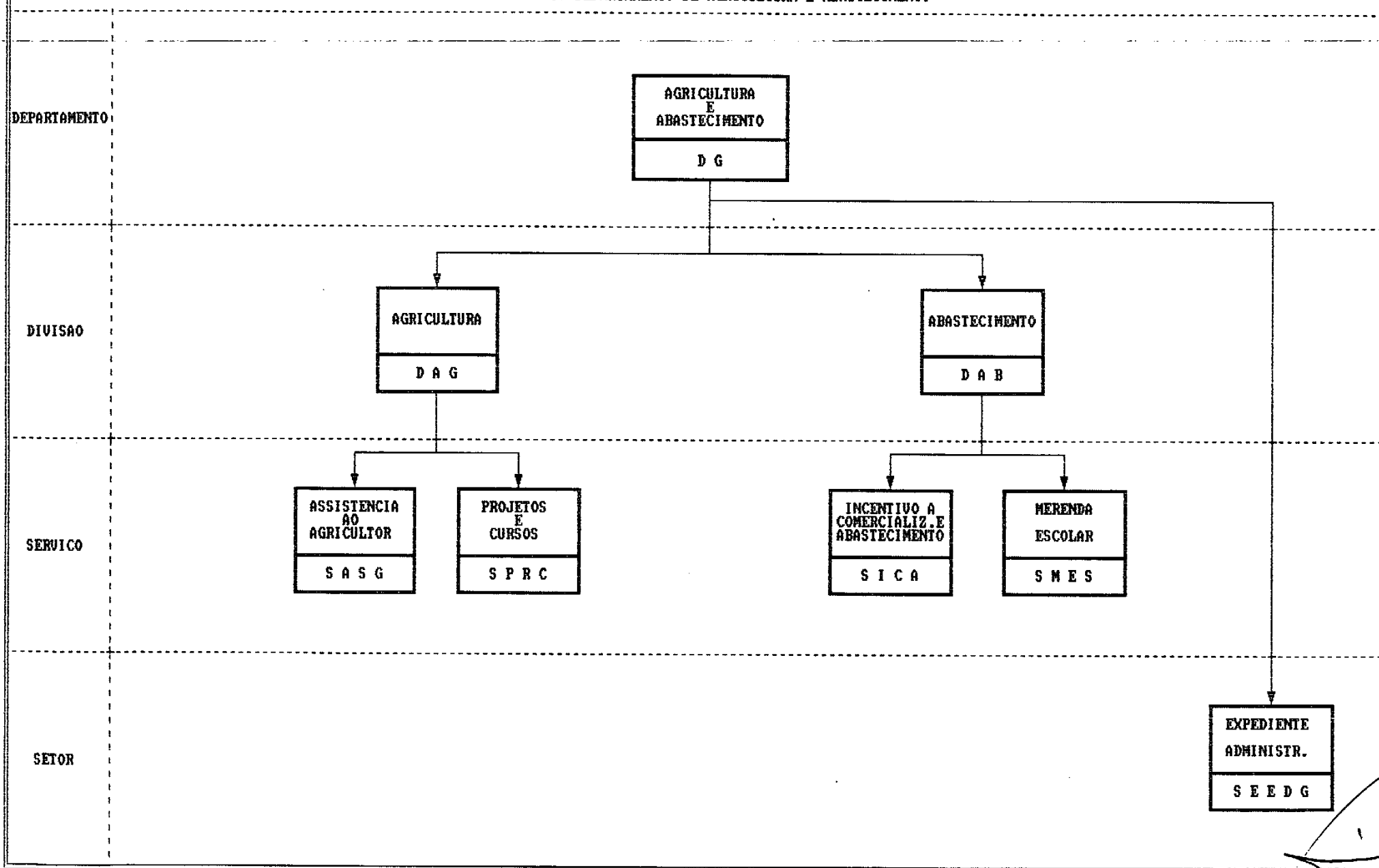
## ORGANOGRAMA DO DEPARTAMENTO DE EDUCACAO E CULTURA



## ORGANOGRAMA DO DEPARTAMENTO DE TURISMO, ESPORTE E LAZER

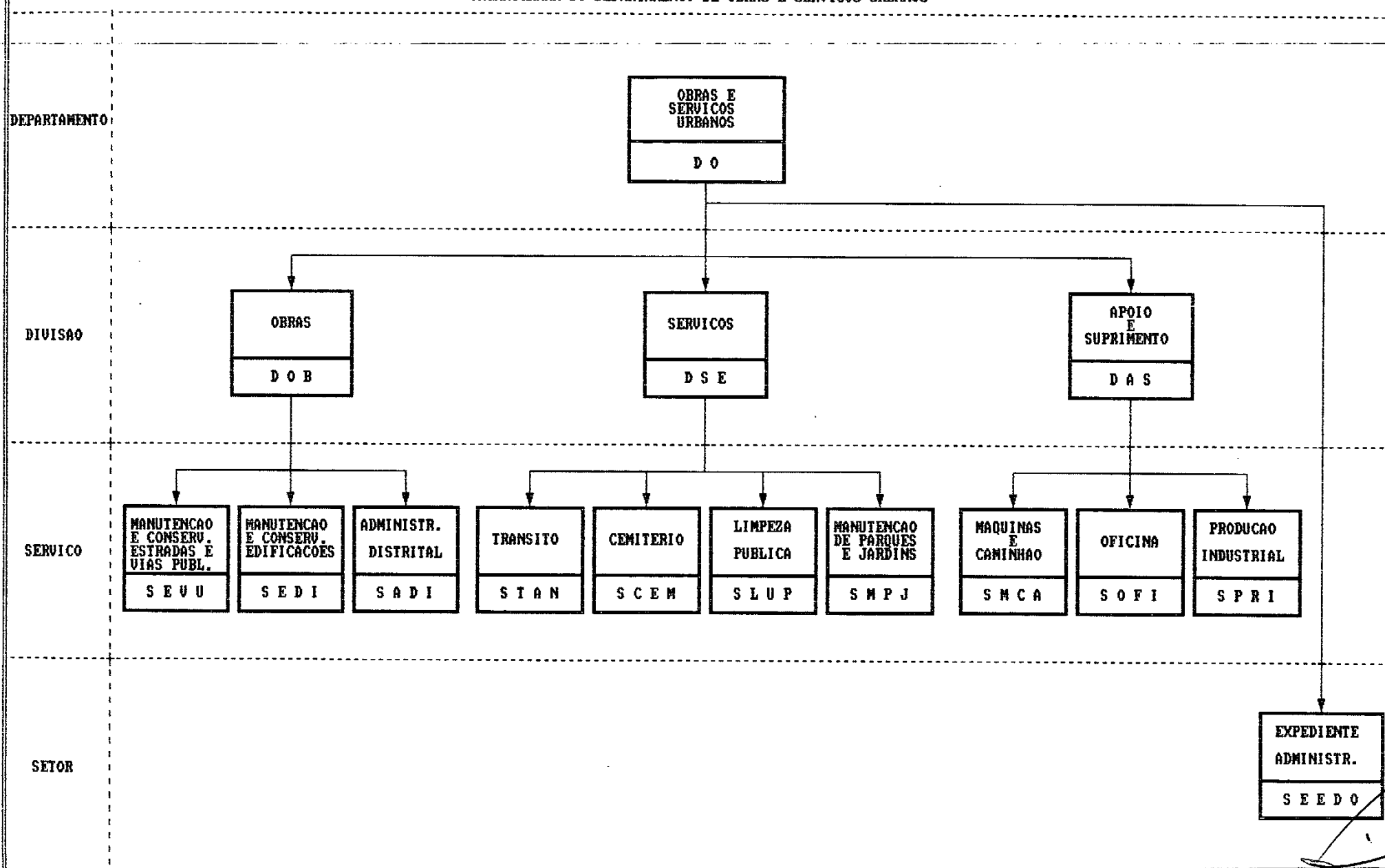


## ORGANOGRAMA DO DEPARTAMENTO DE AGRICULTURA E ABASTECIMENTO





## ORGANOGRAMA DO DEPARTAMENTO DE OBRAS E SERVICOS URBANOS



## ORGANOGRAMA DO DEPARTAMENTO DE PLANEJAMENTO E MEIO AMBIENTE

DEPARTAMENTO

PLANEJAMENTO  
E  
MEIO AMBIENTE

D P

DIVISAO

PLANEJAMENTO  
E  
PROJETO

D P P

HABITACAO  
POPULAR

D H P

ARQUITETURA  
E  
URBANISMO

D A U

SERVICO

CADASTRO E  
DESENHO  
TECNICO

S C D T

CONTROLE DE  
OBRAS E  
SERVICOS

S C O B

MEIO  
AMBIENTE

S M E A

SETOR

EXPEDIENTE  
ADMINISTR.

S E E D P

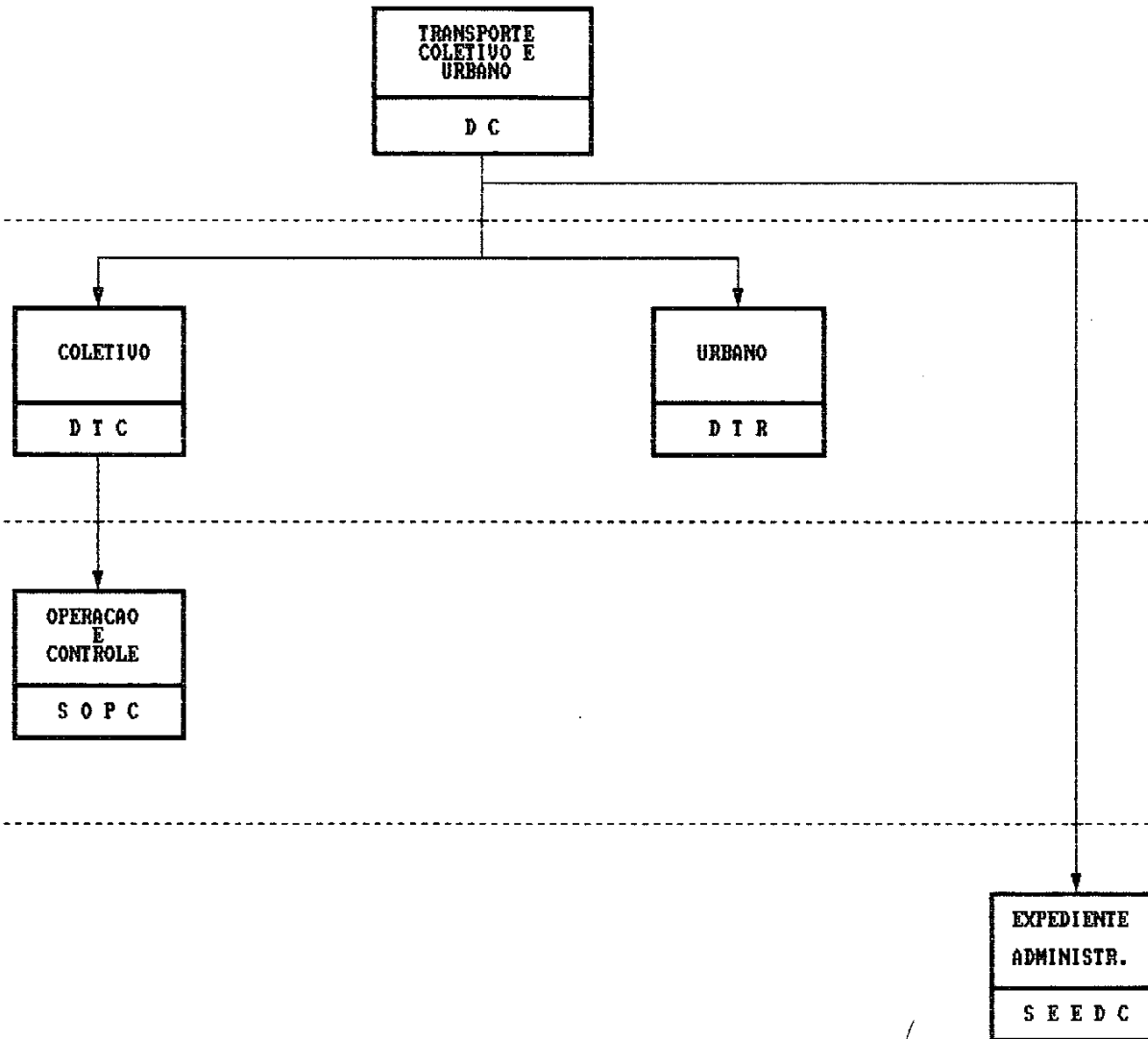
ORGANOGRAMA DO DEPARTAMENTO DE TRANSPORTE COLETIVO E URBANO

DEPARTAMENTO

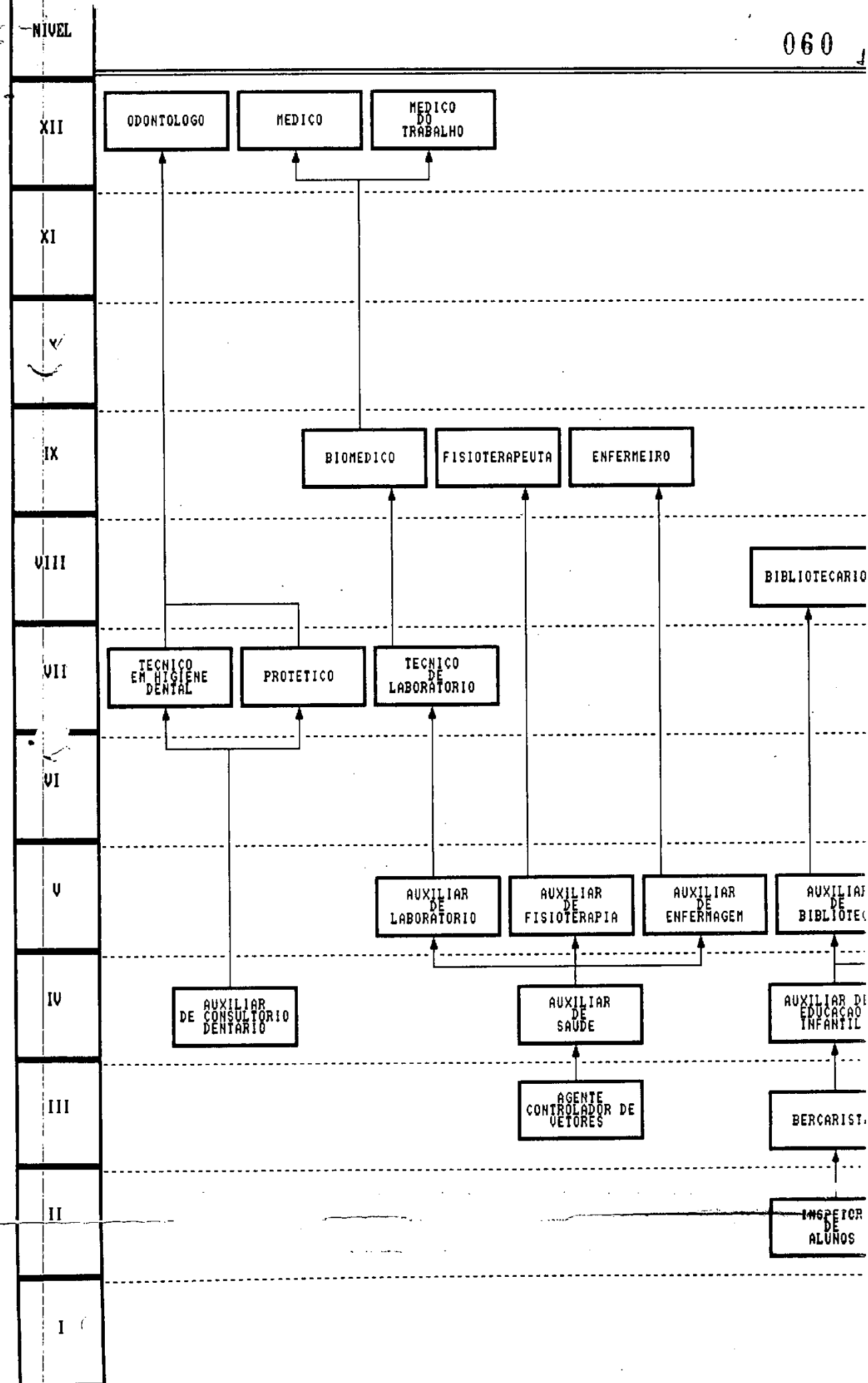
DIVISAO

SERVICO

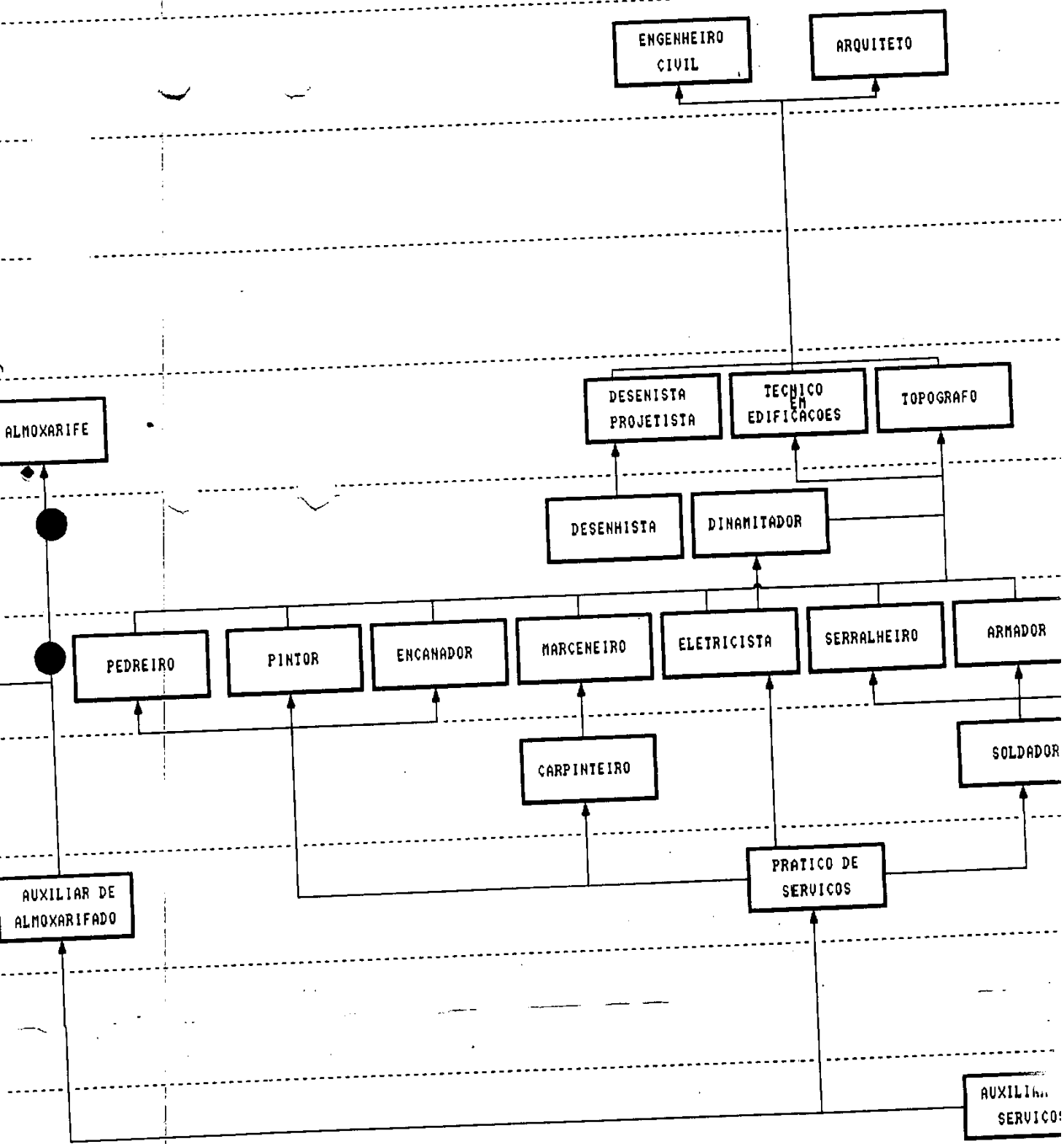
SETOR

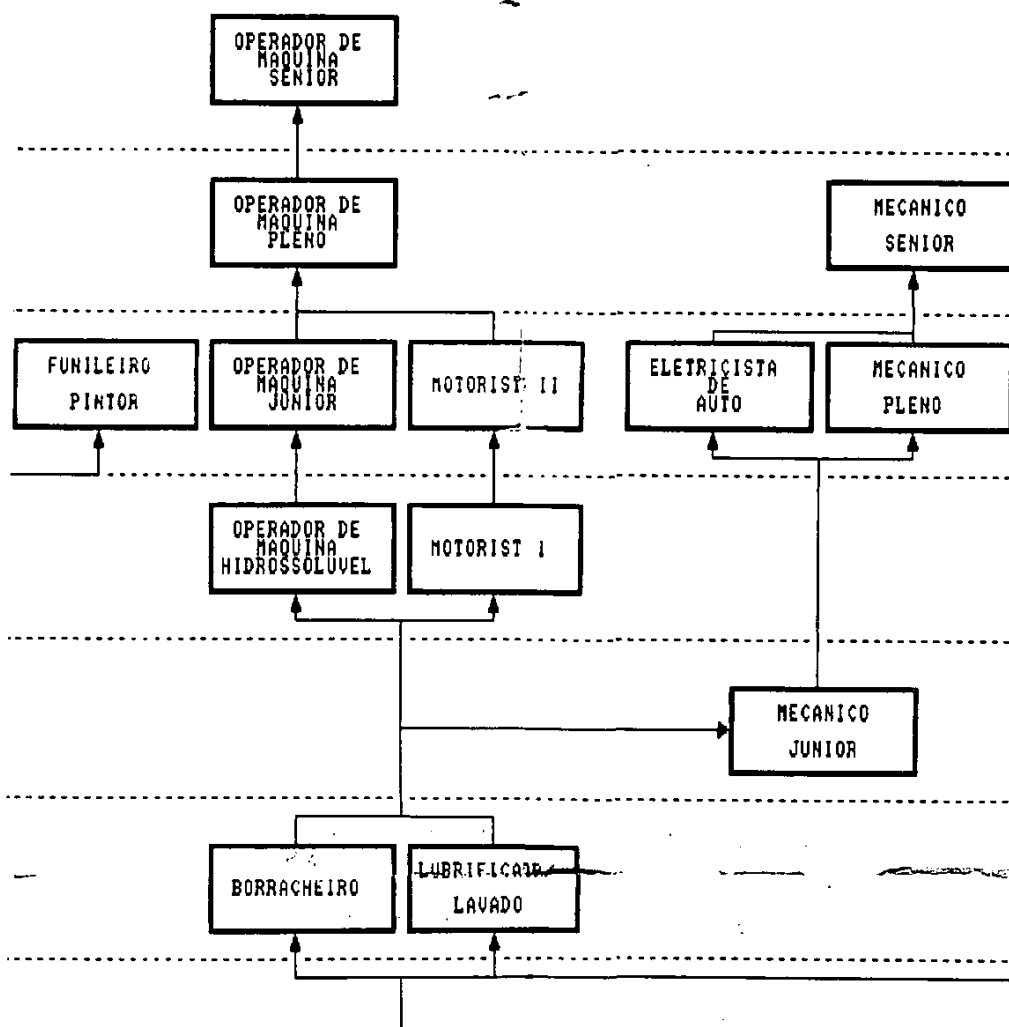


NIVEL	CARGOS
X	ADVOGADO
IX	FARMACEUTICO FONOAUDILOGO PSICOLOGO
VIII	
VII	TECNICO DE RAO X ENCADERNADOR
VI	
V	
IV	
III	COBRADOR
II	
I	

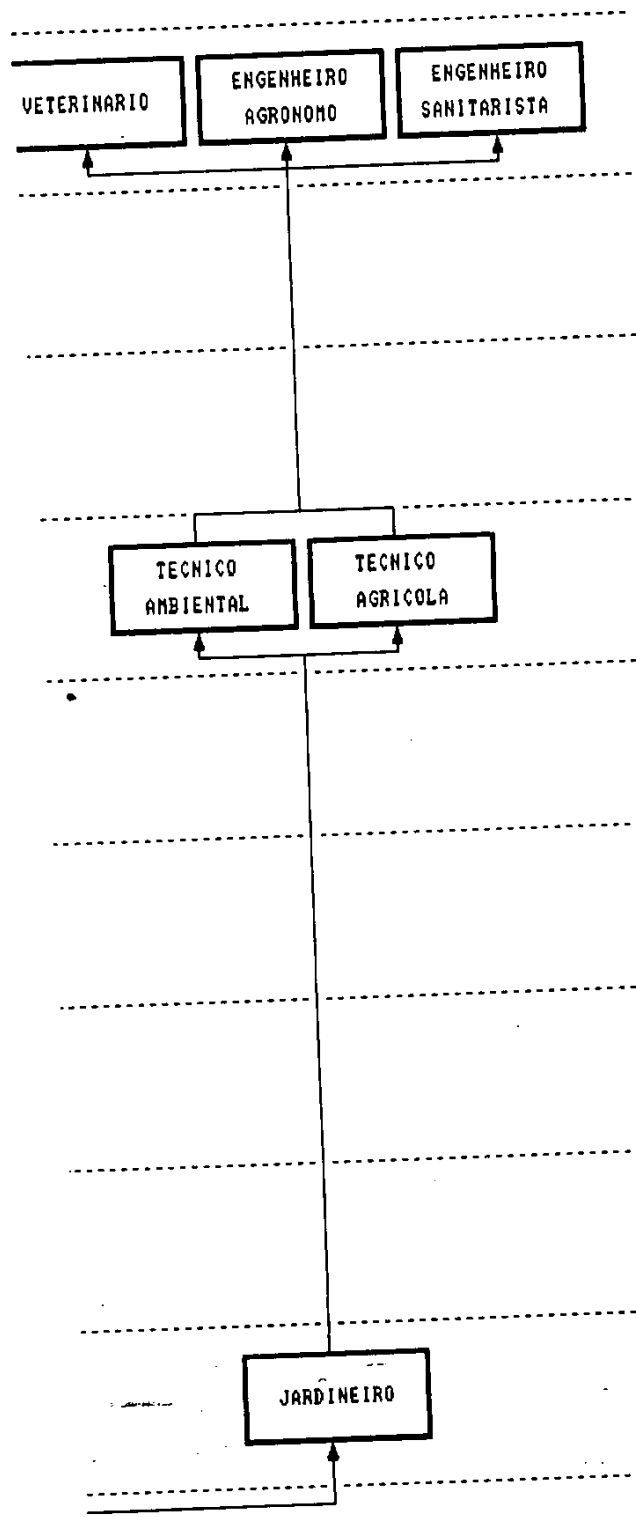












*[Handwritten signature]*

*[Handwritten mark]*